

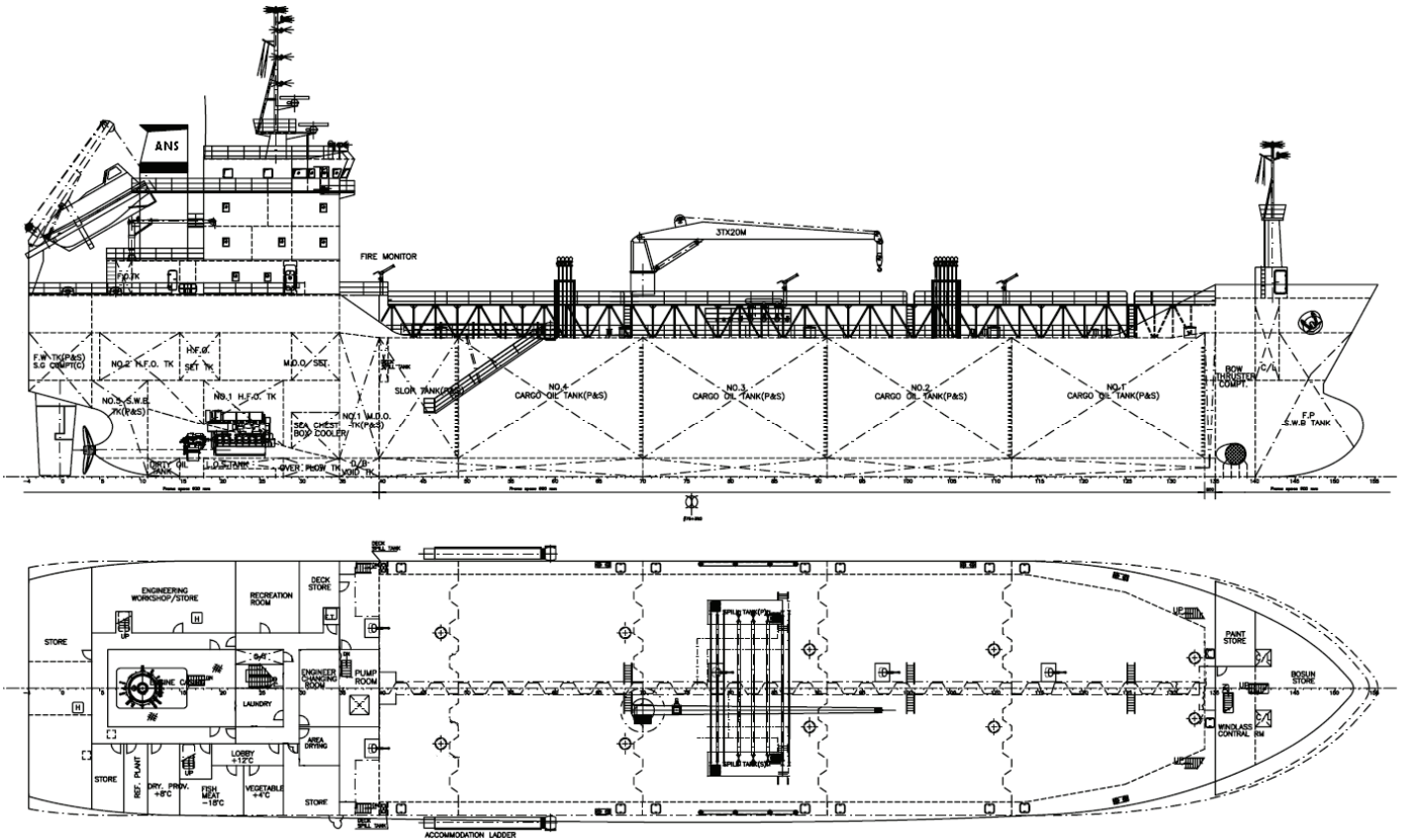
# TA 70 Class *Product Tanker*

## DESCRIPTION

Singel screw Double Hull Oil/Chemical Tanker. Ship design to fully load cargo with specific gravity up to 1.025 mt/m<sup>3</sup> and flash point below 60°C Ships fitted with 10 cargo oil tanks. Cargo unloading/loading capacity is 500 m<sup>3</sup>/h at 380cst, 50°C. The ship is able to load/unload three different grades of cargo simultaneously. Bow thruster fitted. Crew complement 20 persons.

**BUILT** Qing Dao Qian Jin Shipyard, Qing Dao, P.R. of China.  
**FLAG** British  
**HOME PORT** London  
**CLASS** BV 1+ Oil Tanker ESP, Flash point < 60°C, +MACH, Unrestricted Navigation, DP-1  
**MANAGERS/AGENTS** Norbulk (UK) Ltd, 68 Glassford Street, Glasgow G1 1UP  
 Tel: +44 141 552 3000 / Fax: +44 141 559 5250  
 mail@norbulkshipping.com

THE FLEET	BUILT
ANUKET JADE	2008
ANUKET RUBY	2008
ANUKET SAPPHIRE	2008



## TONNAGES

- DWT: about 7000
- GT/NT: 5851/2031
- Panama -
- Suez-

## DIMENSIONS

- LOA: 101,4m
- LPP: 97,3m
- Beam: 19,0m
- T: 6,5 m
- Max Air Draft,t: 28,5m

## TANK CAPACITIES

- Cargo tanks (98% full) 9022 mt
- Fuel (HFO+DO) 624 mt
- Fresh Water (98% full) 150 mt
- Water Ballast 3000 mt

## BOILER

- Oil fired boiler 5mt/h at 7 BAR
- Exhaust boiler 1mt/h at 7 BAR

## MAIN ENGINE

- 1 x MAK 9M25
- MCR 2970 kW / 750 RPM

## GENERATORS

- Auxiliaries: 3 x 500 kW

## SPEED & CONSUMPTION

- About 12,0 knots on about 12,0 t IFO 380cst/24 h
- Port consumption About 3,0 mt MDO while discharging
- Endurance: 9000 nm

DECK INFO	Height	Load	Area
Weather deck	-	3,0 tonnes/m <sup>2</sup>	2330 m <sup>2</sup>
Upper deck	4,72 m	3,0 tonnes/m <sup>2</sup>	3390 m <sup>2</sup>
Main deck	5,57 m	6,0 tonnes/m <sup>2</sup>	3300 m <sup>2</sup>
Tank top	5,57 m	6,0 tonnes/m <sup>2</sup>	1524 m <sup>2</sup>