

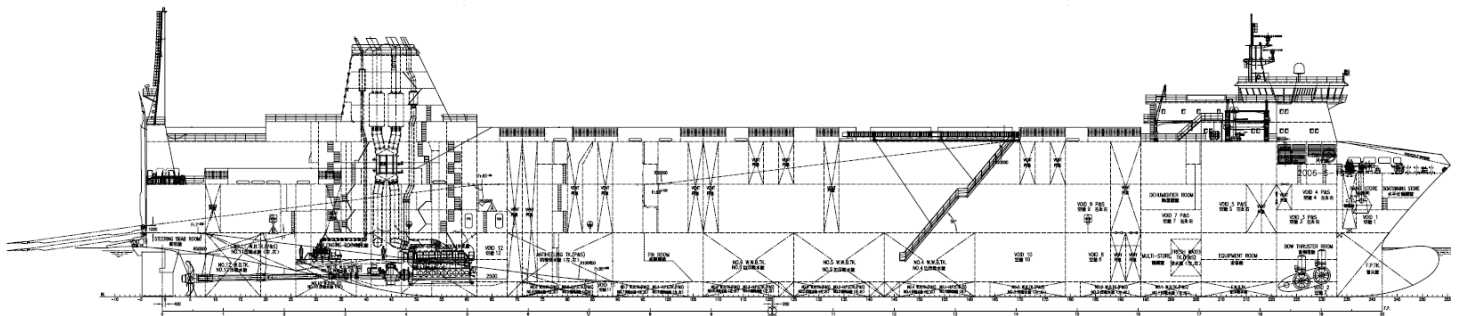


MSG 113 Class *RoRo vessel*

DESCRIPTION Twin screw Ro-Ro paper trailer carrier vessel, with four cargo decks and two ramps located aft. Fitted for containers with twin bow thrusters and stabilisation system. Acces to all deck from the ramps.
Crew 16+1 persons.
Passenger capacity 12 persons.

BUILT Jingling Shipyard, Nanjing, P.R. of China.
FLAG British
HOME PORT London
CLASS ABS+100A1, Roll on/Roll of cargo ship, Ice Class 1A, Solas 11 p. 54, +LMC, NAV1, UMS, *IWS, SCM
E-MAIL AdMare@AdMare.nu
MANAGERS/AGENT Ad Mare AB Västrattamngatan 19, SE-41117 Göteborg
Tel: +46 31 749 85 80

M/V THE FLEET Seaways	BUILT
M/V CORONA Seaways	2008
M/V HAFNIA Seaways	2008
M/V FIONIA Seaways	2009
M/V JUTLANDIA Seaways	2010



TONNAGES

- DWAT: about 11322t
- GT/NT: 26654 / 7696
- Panama:
- Suez:

DIMENSIONS

- LOA: 187,1m
- LPP: 169,8m
- Beam: 26,5m
- Draft: 6,90 m
- Max Air Draft, less draft aft: 34.7m

CAPACITY

- Ro-Ro: 3322 lane meters
- Cassettes 3666 lane meters
- Containers 324 TEU *

VENTILATION

- Electrical ventilation,
25 air changes per hour in port.
10 air changes per hour at sea.

MAIN ENGINES

- 2 x MAN L 48/60 B MCR 9600 kW / 500 RPM

STERN RAMPS

- S-SIDE SIZE: 19,0 m x 14,9 m.
Max angel to level ° -8 to +8
- P-SIDE SIZE: 19,0 m x 7,3 m.
- Load: St 200t (uniform)
- Width: Ps W6,53m x H5,5m
St W14,2m x H5,9m

REEFER PLUGS

- Top deck: 20
- Upper deck: 35
- Main deck: 20

TANK CAPACITIES

- IFO 380 cst: 1080 mt
- DO: 172 mt
- Fresh Water: 230 mt
- Water Ballast: 5570 mt

GENERATORS

- Auxiliaries: 2 x 800 kW
- Shaft Generators: 2 x 1200 kW

SPEED & RANGE

- About 20,0 knots
- Endurance: 6000 nm

* TOR Corona & TOR Hafnia only

DECK INFO	Lane meters	TEU*	Height	Load	Area
Top deck	726m	216	-	3,0 tonnes/m ²	2330 m ²
Upper deck	1085m	108	4,72 m	3,0 tonnes/m ²	3390 m ²
Main deck	1043m	-	5,57 m	6,0 tonnes/m ²	3300 m ²
Tank top	469m	-	5,57 m	6,0 tonnes/m ²	1524 m ²